



American
Society
on Aging

December 1, 2023

ASA Chicagoland Roundtable

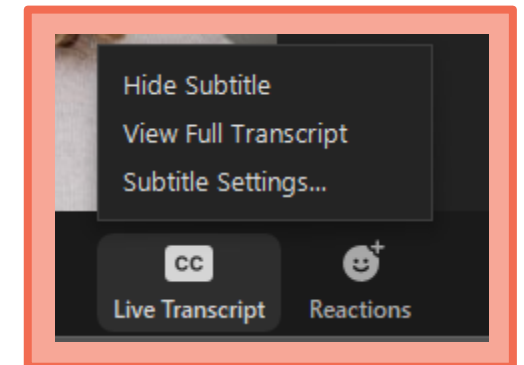
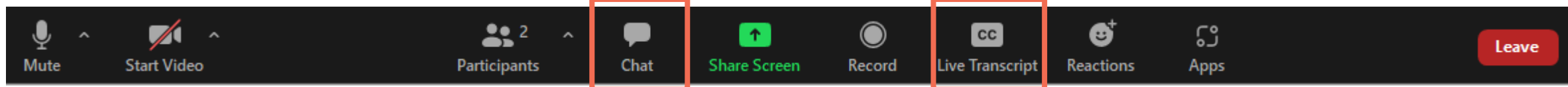
**Expanding Care Options in the Community:
The PACE Program Comes to Illinois**

Logistics

Submit your questions into the chat box as we go

Slides and a recording will be shared with registrants

Closed captioning available



Today's speakers

- **Paula Basta**, Director of the Illinois Department on Aging
- **Shawn Bloom**, President and CEO, National PACE Association
- **Lisa Gregory**, Chief, Bureau of Long Term Care, Illinois Department of Healthcare and Family Services
- **Representatives from 3 Illinois PACE programs launching in 2024:**
 - Kinship PACE of Illinois
 - Lawndale Christian Health Center
 - BoldAge PACE Illinois
- **Marsha Johnson**, Director of CCU Services, CCSI-Case Coordination, LLC
- *Moderated by:* **Robyn Golden**, Associate Vice President of Social Work and Community Health, Rush University Medical Center

Paula Basta



DIRECTOR, ILLINOIS DEPARTMENT ON AGING

Shawn Bloom



PRESIDENT AND CEO, NATIONAL PACE ASSOCIATION

Lisa Gregory



CHIEF, BUREAU OF LONG TERM CARE

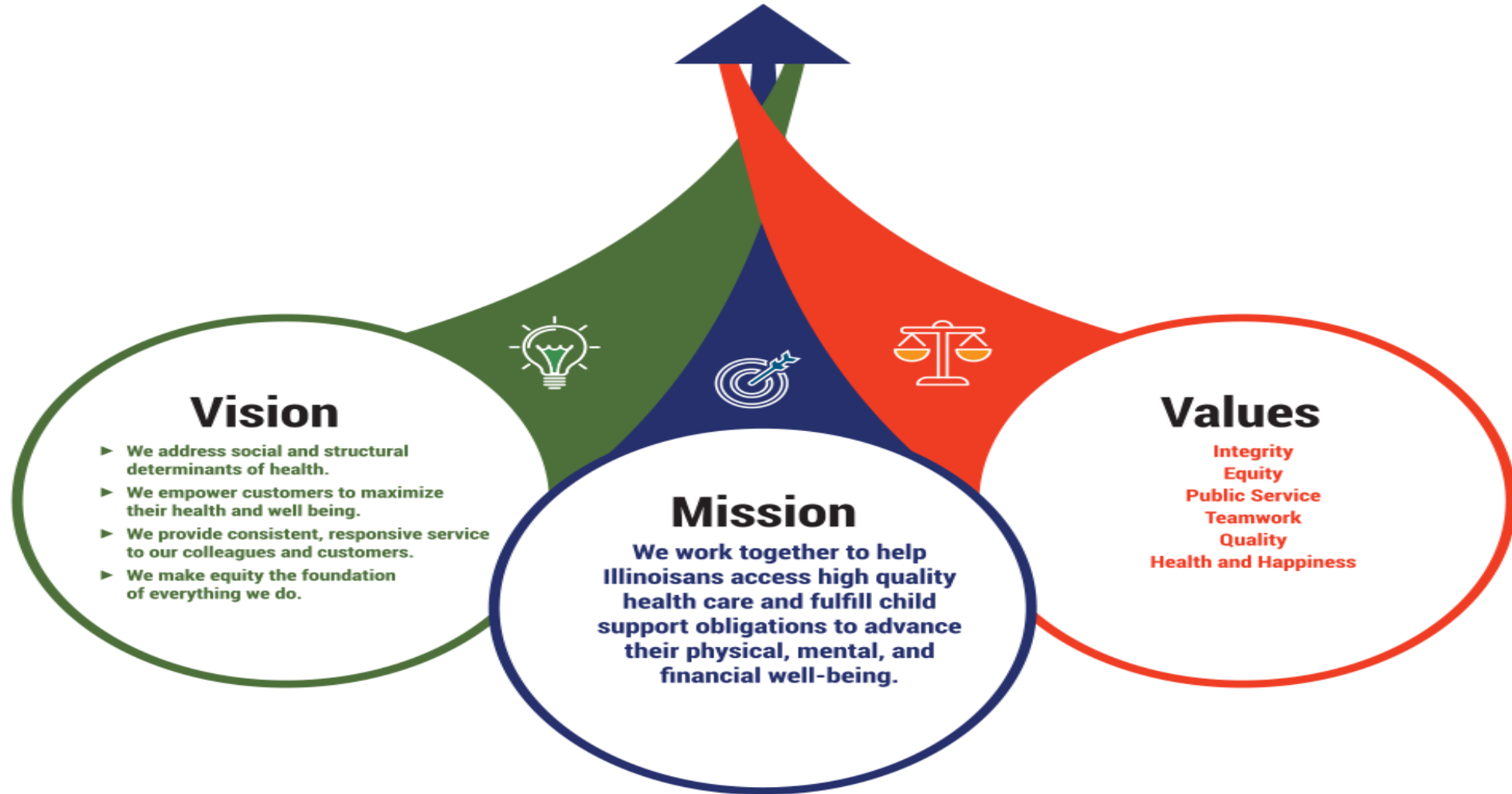
ILLINOIS DEPARTMENT OF HEALTHCARE AND FAMILY SERVICES



HFS

**Illinois Department of
Healthcare and Family Services**

**Program of All-Inclusive Care for the
Elderly (PACE)**



Illinois PACE History

In 2003, Illinois added PACE as a Medicaid State Plan service. The first “pre-PACE” program was operated by Chicago REACH and sponsored by Sacred Heart Hospital. It did not reach certification as a full-PACE site and operation was discontinued in 2012/2013 for reasons unrelated to PACE.

SB 2294 / P.A. 102-0043 required HFS to pursue the implementation of PACE.



ILLINOIS PACE VISION

Goals for Illinois

- Improve health and wellness for individuals and communities
- Tailor solutions to meet the unique needs of individual communities
- Support healthcare delivery models that improve outcomes, decrease disparities, and are sustainable over time
- Align the PACE program strategy with the other HFS initiatives related to healthcare transformation.



MARKET ANALYSIS

Three Step Process

- Created a Market Inventory
- Developed Statistics Evaluating Potential Service Areas
- Designed Contiguous Zip Code Service Areas

MARKET ANALYSIS

- Eligible Participants in Total Market Area
- Density of Total Market Area
- Estimated Eligible Participants in Core Market Area
- Density of Core Market Area

Target Market Criteria

Estimated Eligible Participants in Total Market Area	>	1,000
Density of Total Market Area	>	1.00
Estimated Eligible Participants in Core Market Area	>	500
Density of Core Market Area	>	2.00
Total Land Area	<	1,200



PACE REGIONS OF SERVICE

Initial Target Service Areas

- West Chicago
- South Chicago
- Southern Cook
- Peoria
- East St. Louis

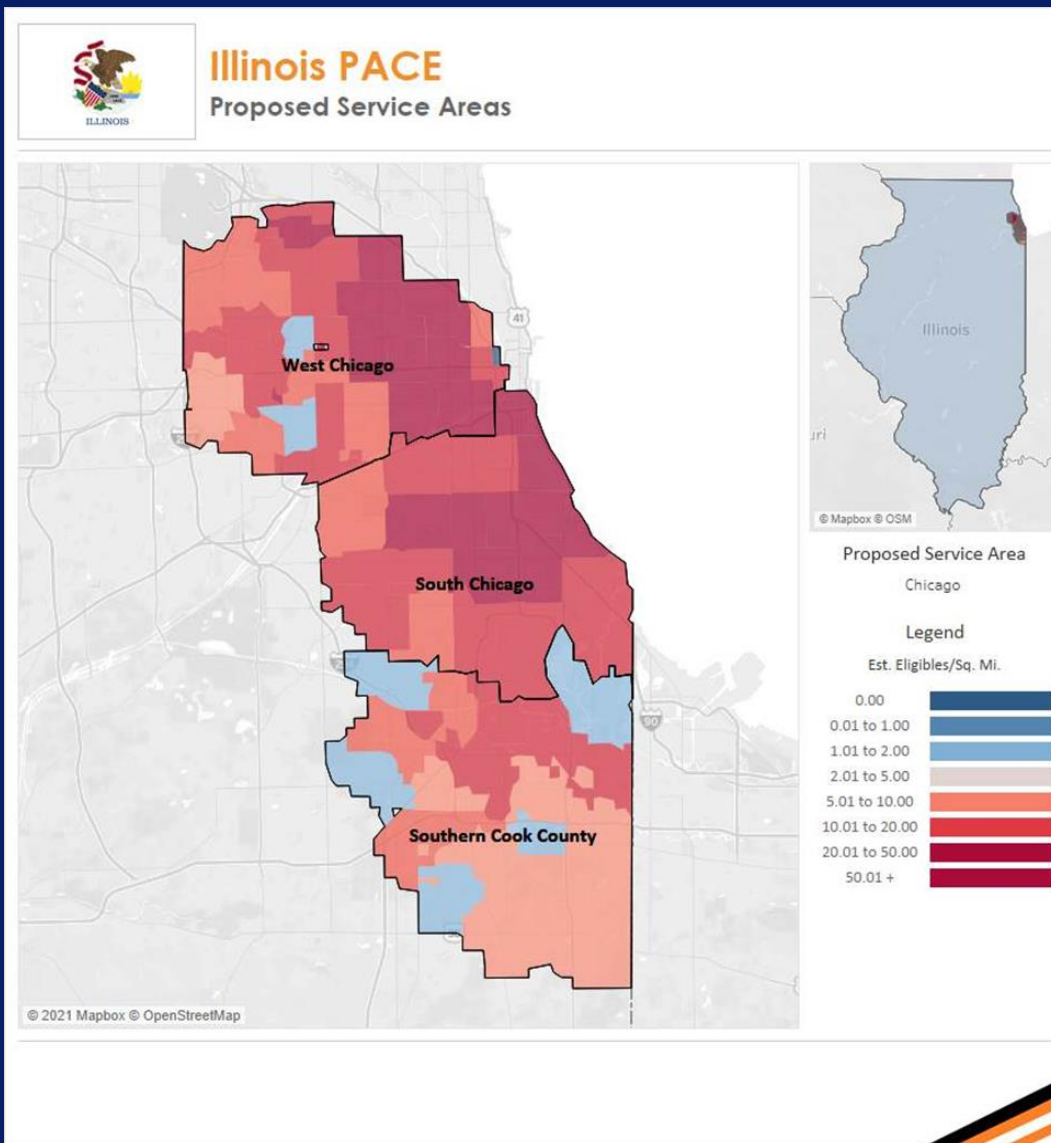


Illinois PACE Proposed Service Areas

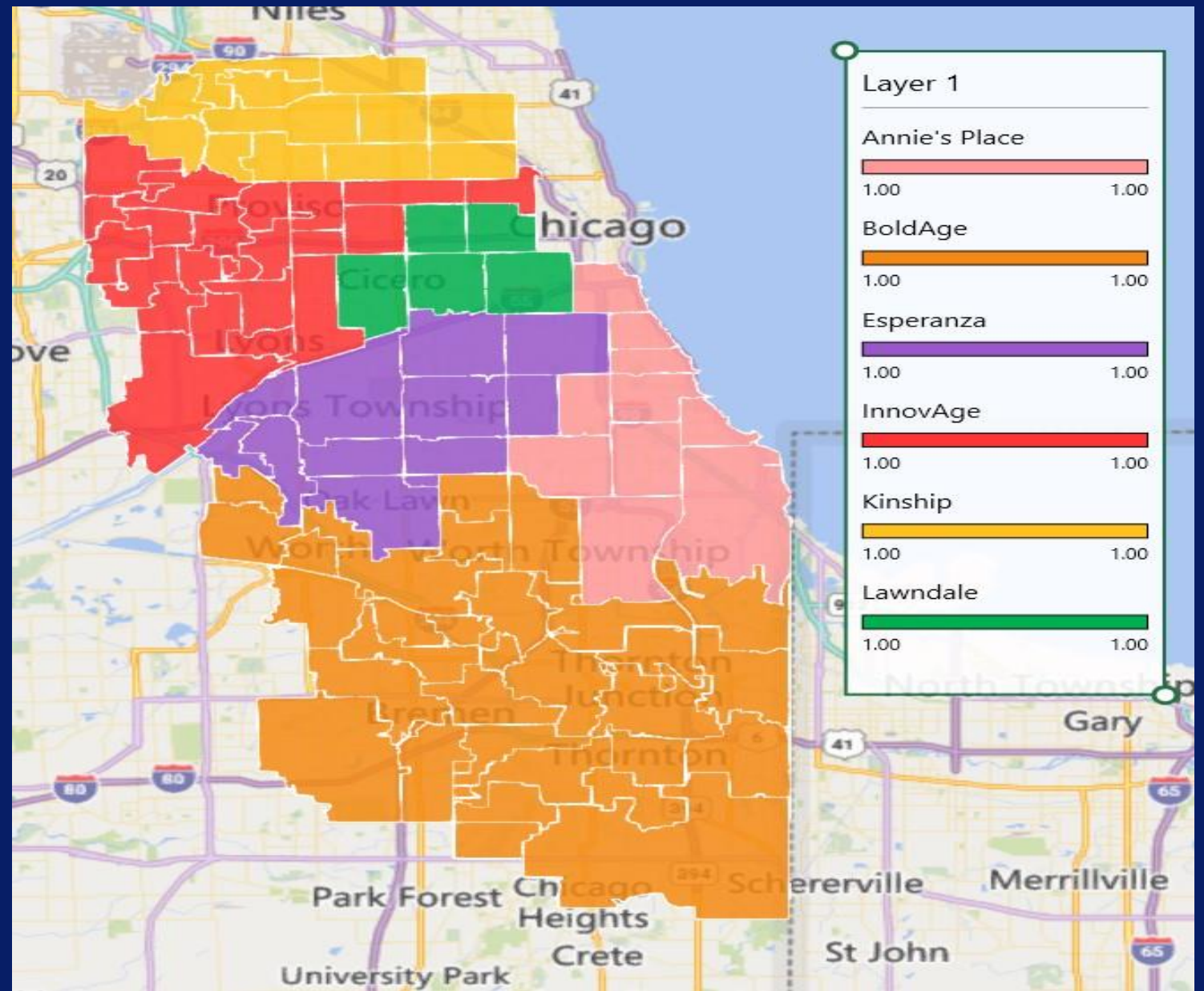


Three Proposed Chicago Metro Service Areas:

- West Chicago
- South Chicago
- Southern Cook County



Chicago/Cook County Regions

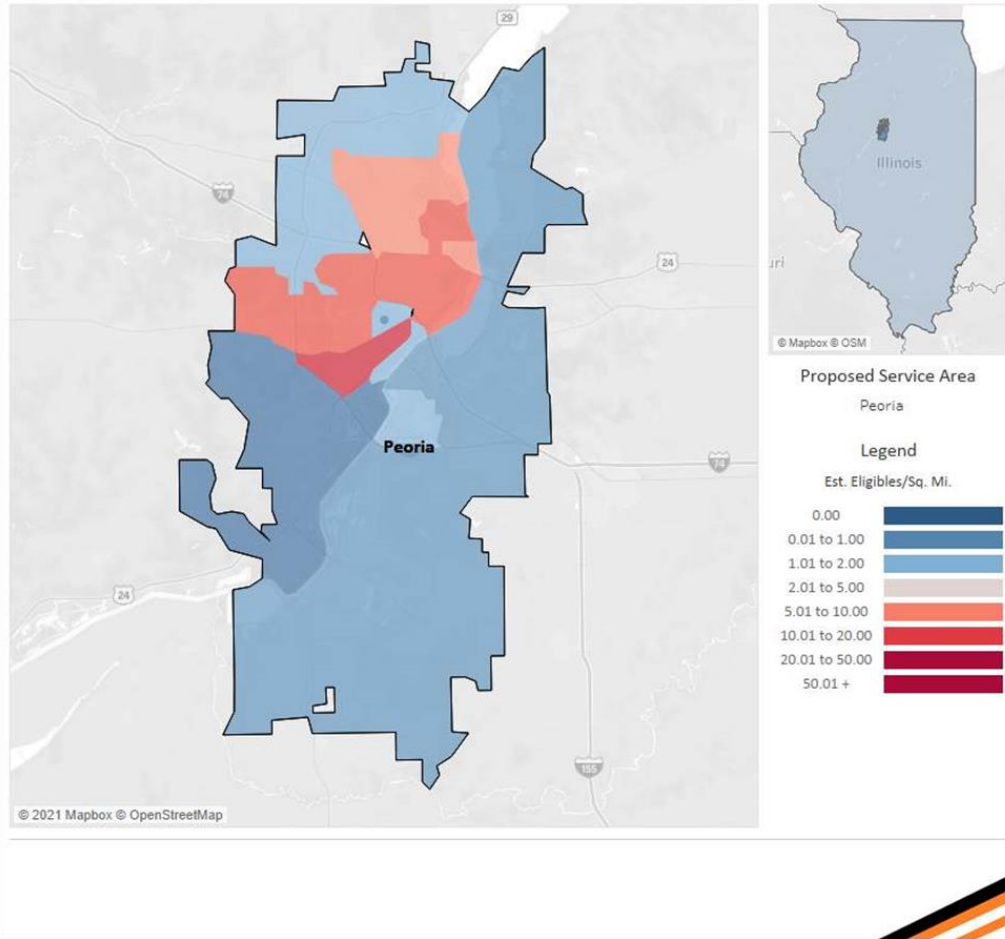




Illinois PACE Proposed Service Areas



Proposed Peoria Service Area

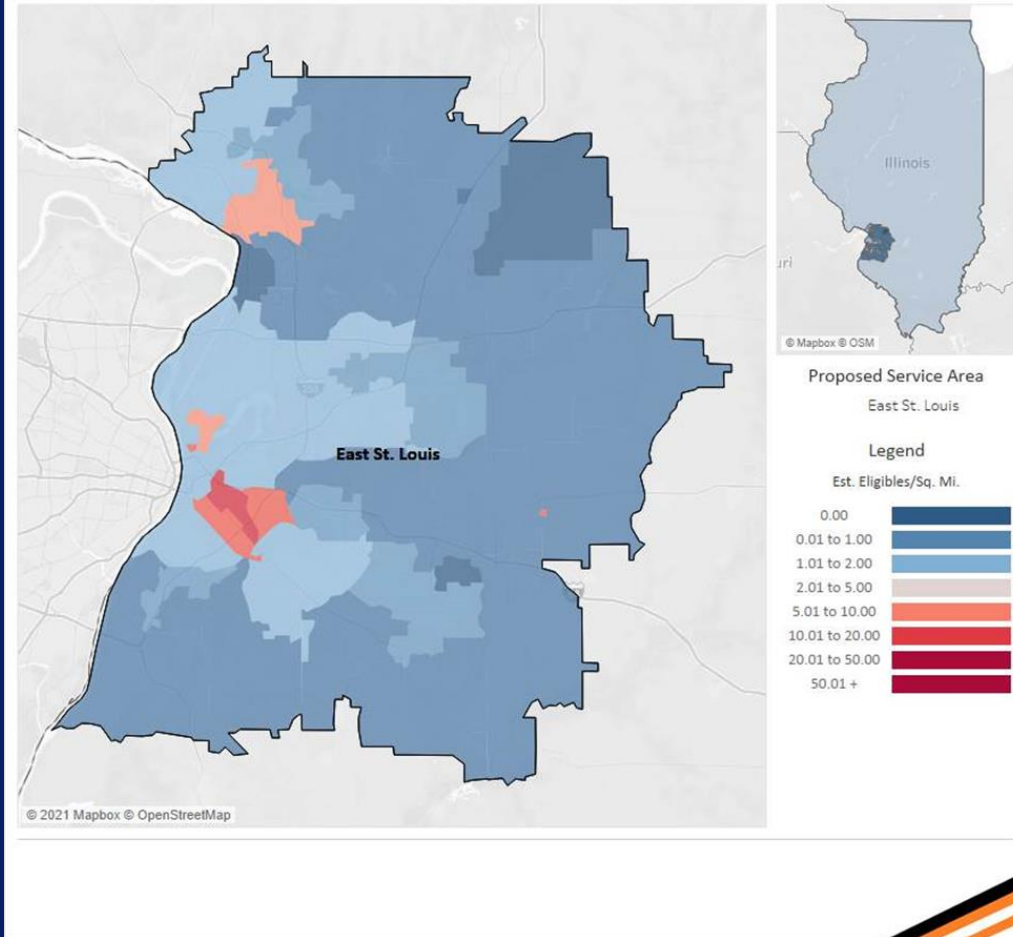




Illinois PACE Proposed Service Areas



Proposed East St. Louis Service Area



8 PACE Organizations

5 Regions

2024

WEST CHICAGO

- ❖ Kinship PACE of Illinois, LLC
- ❖ Lawndale Christian Health Center
- ❖ InnovAge

SOUTH CHICAGO

- ❖ Annie's Place PACE
- ❖ Esperanza Health Centers

SOUTHERN COOK COUNTY

- ❖ BoldAge PACE Illinois

PEORIA

- ❖ OSF HealthCare System

EAST ST. LOUIS

- ❖ Stella PACE at Home, LLC



OPEN DISCUSSION

BoldAge PACE Promise

To help older adults live a meaningful, independent life at home, with grace and dignity.

We do this by providing holistic care to address the physical, behavioral, and social well-being of older adults and creating the greatest opportunity for them to live happily and healthily in their own homes for as long as possible.

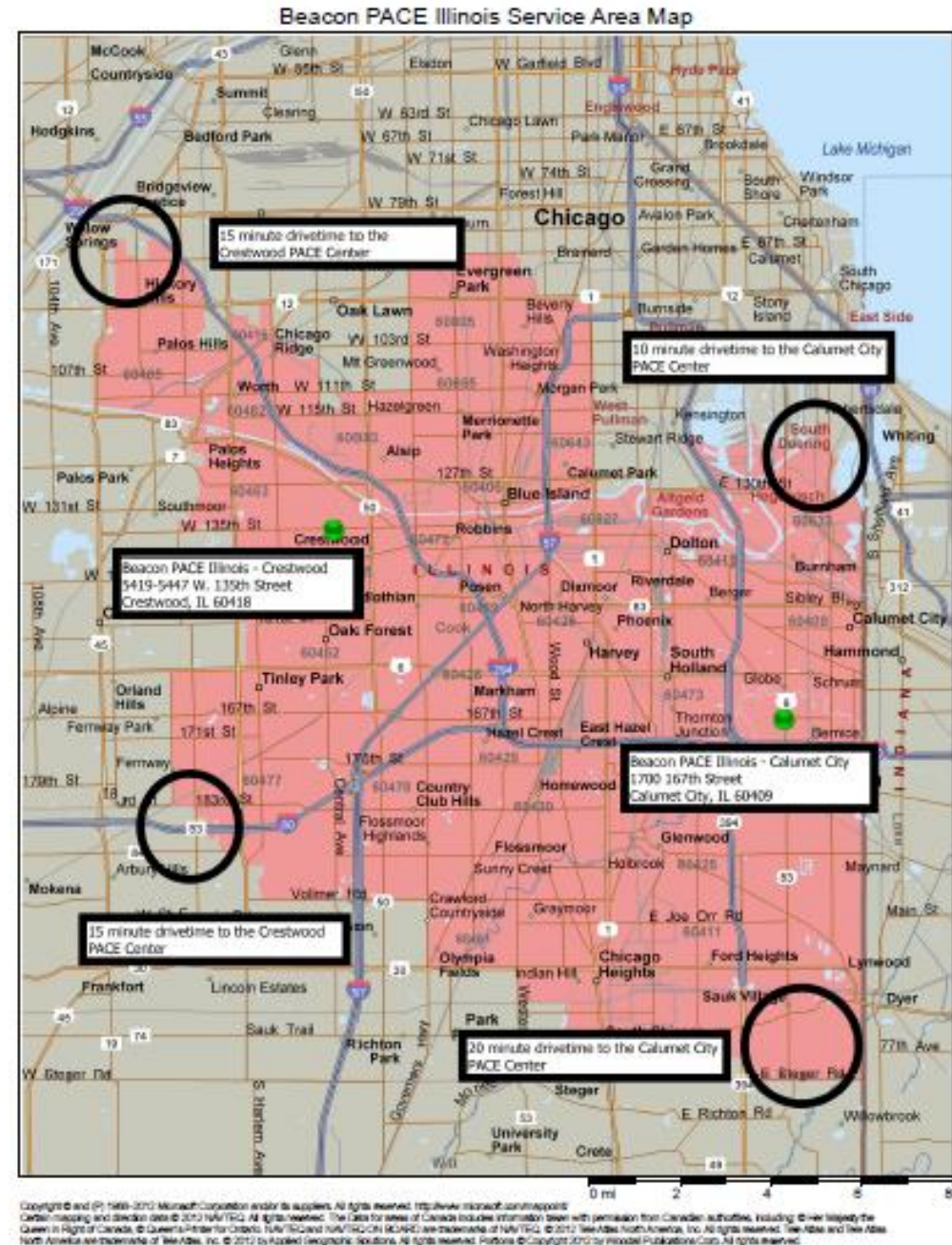


The independence you want. The care you need.

BoldAge PACE Illinois center locations:

- Calumet City: 1700 167th St., 500+ participants
- Crestwood: 5419 W. 135th St., 150+ participants

Services provided at the PACE center, in-home, and hospital/specialist settings





PACE “EYE” is Essential

- The PACE IDT manages a *small* group of participants.
- IDT members get to *know* participants well.
- Issues are addressed *early and effectively*.

Example: A participant’s driver notices that she’s limping as he helps her to the van in the morning. The driver passes that information on to the clinic nurse and physical therapist who evaluate her injury and start her on a rehabilitation protocol that day!





BoldAge



The independence you want. The care you need.

James Sawyer
Regional Executive Director
jsawyer@boldagepace.com
610.233.6654

Leigh Hull
Director of Business Development
lhull@boldagepace.com
303.638.3788



Thank You!



Lawndale Christian Health Center

JONATHAN WILDT, CHIEF OPERATING OFFICER

Kinship PACE of Illinois

JUDY KOHN, CHIEF STRATEGY OFFICER

Kinship PACE of Illinois

Kinship Health

To improve and increase access to PACE programs by developing Kinship PACE into a national platform and by supporting existing PACE Programs to achieve their mission in local communities.

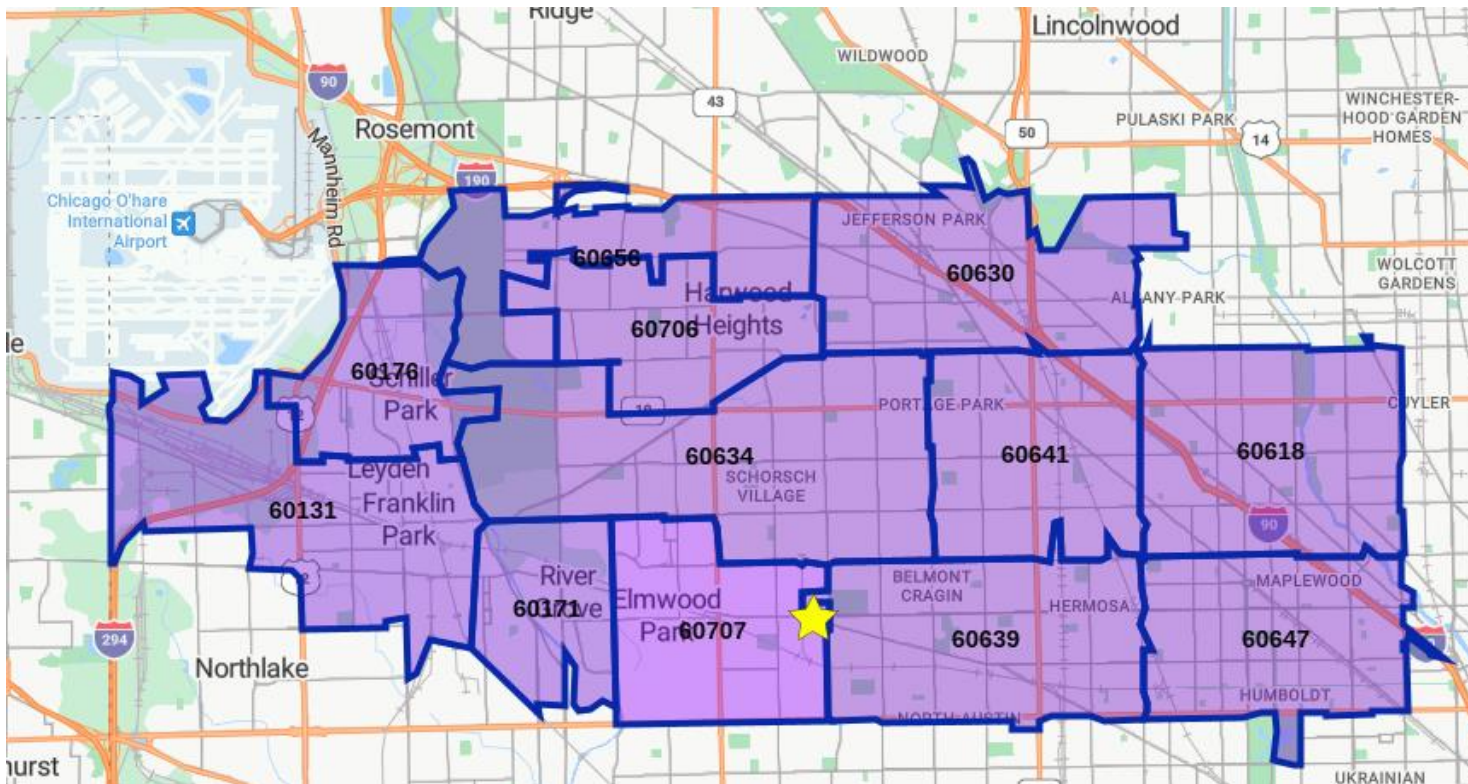
Kinship PACE

Our mission is to enhance quality of life and foster independence among older adults in the community through partnership with them, their families, caregivers, and healthcare providers. Our model of care prioritizes patient-centered decisions, along with high quality, personalized, ethnically, and culturally sensitive care and services to enhance the overall health of the community.



Our Service Area

★ Kinship PACE Center
Address: 6560 W Fullerton
Ave, Suite C 144
Chicago, IL, 60707



All or Portion of the following Communities:

- Albany Park
- Austin
- Avondale
- Belmont Cragin
- Dunning
- Elmwood Park
- Forest Glen
- Franklin Park
- Harwood Heights
- Hermosa
- Irving Park
- Jefferson Park
- Logan Square
- Montclare
- North Center
- North Park
- Norwood Park
- O'Hare
- Portage Park
- River Grove
- Schiller Park

Service Area Zip Codes: 60176, 60656, 60706, 60634, 60131, 60171, 60707, 60639, 60647, 60618, 60641, 60630

Kinship's Core Values

As we looked to differentiate our approach as a PACE program, we wanted to find a way to simultaneously increase participants' access to care and overall satisfaction while helping improve the overall communities where our participants reside.

In each of our markets, we actively seek to identify Community Partners such as Care Coordination Units, housing providers, health systems, behavioral health centers, churches, shelters, federally qualified health centers, and other not-for-profit organizations with the goal of improving the quality and access of services for the broader community.

We believe that this can be achieved through Kinship's core values:



Trusted

Gaining support, trust of the community and our participants families are paramount to our success



Community

Improving a participant's surroundings and broader community drive improved quality of living



Commitment to Care

Commitment to treat all members, irrespective of Medicaid, Medicare, private pay with the highest quality care



Leadership

Our leadership team has extensive experience in PACE with track records for building world class PACE and other care programs for the elderly

Kinship Health helps enable older adults to age gracefully and delivers high quality care at the right time in the right setting.

Kinship's Commitment to the Community



Thank you!

For more information, contact:

Judy Kohn

Chief Strategy Officer

Jkohn@kinshiphs.com

Marsha Johnson



DIRECTOR OF CCU SERVICES, CCSI-CASE COORDINATION

Expanding Care Options in the Community: The PACE Program Comes to Illinois

Questions & discussion

Moderated by Robyn Golden

Thank you!

Please share any announcements in the chat

View recordings from recent sessions at <https://aging.rush.edu/policy/asa-chicagoland/>

Please join us for our upcoming Roundtable

- Friday February 2, 2024, 8:30-10:30am for a session on investments in aging and the aging network
- Registration / details will be shared in January via ASA listserv
 - *Rush team will also share registration details in follow-up from today's event*